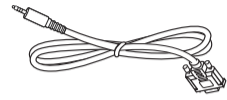
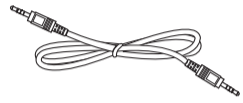


Power Cord



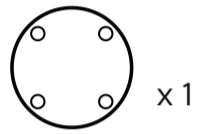
RS232 Cable



RS232 Daisy Chain Cable



Philips logo plate



x1



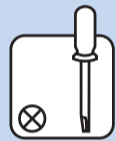
x2



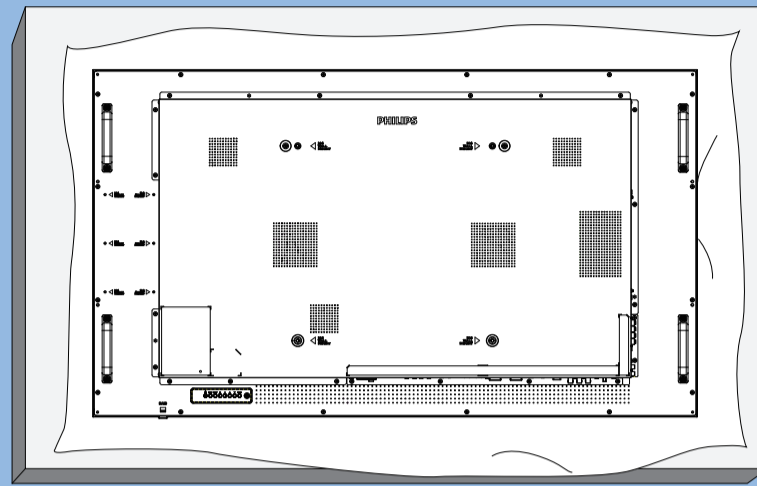
x8

* Differences according to regions.

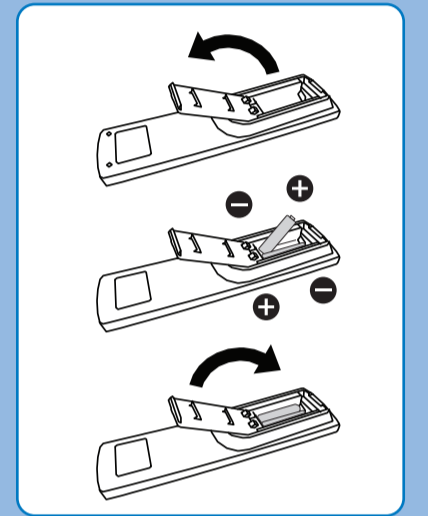
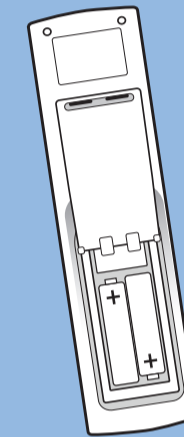
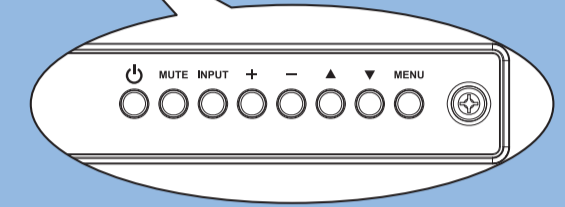
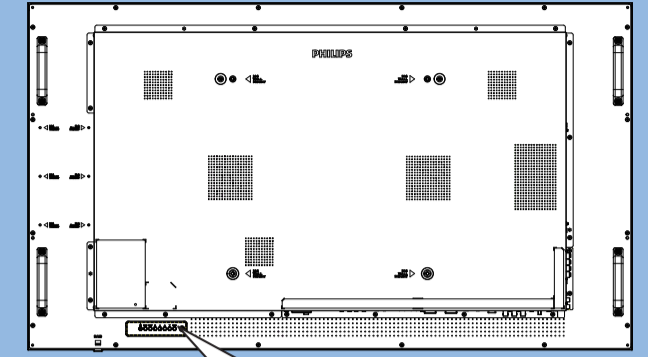
Display design and accessories may differ from those illustrated above.



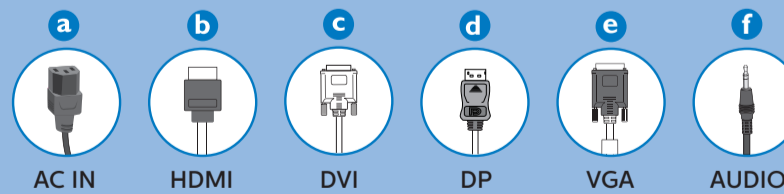
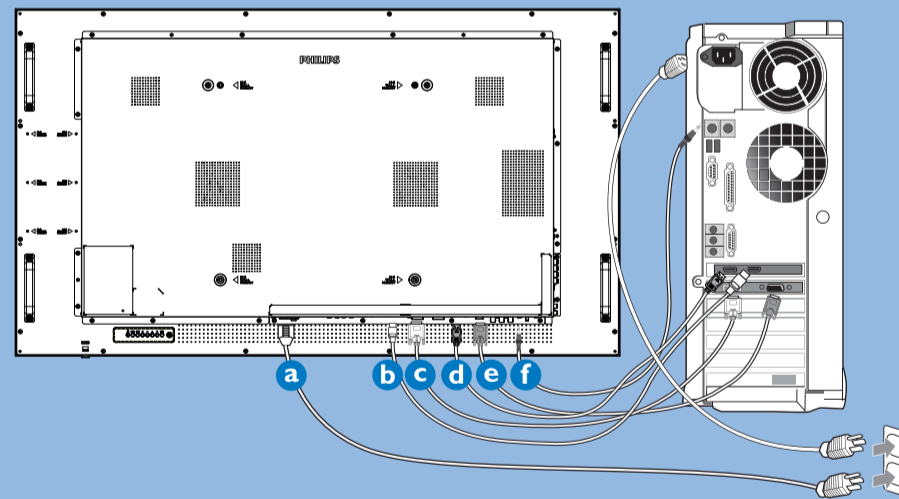
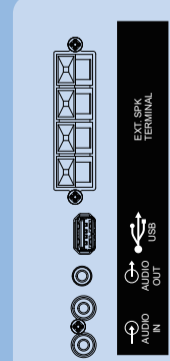
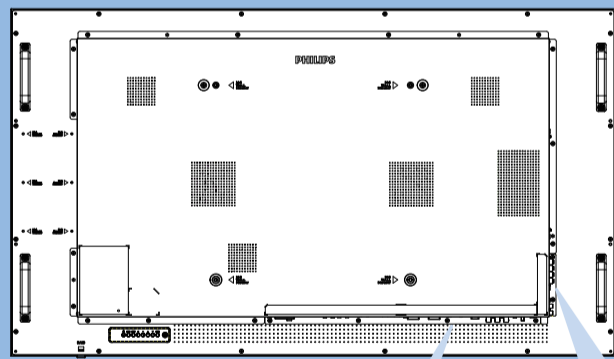
1



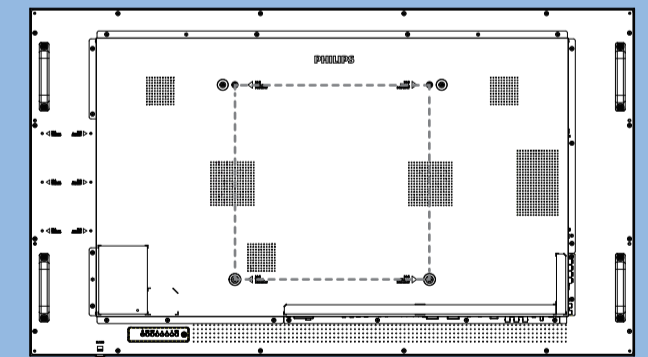
2



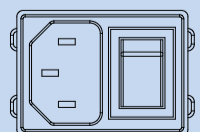
3



4

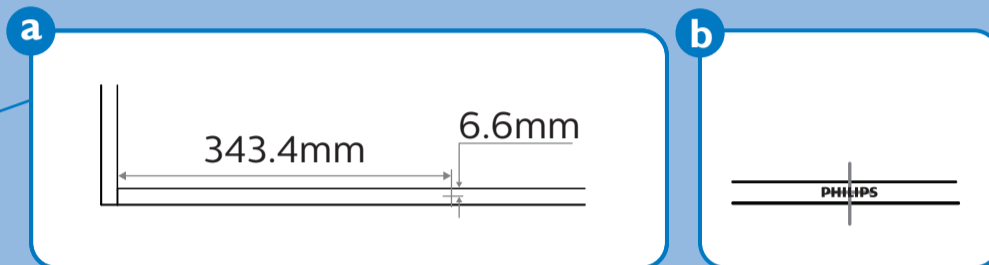
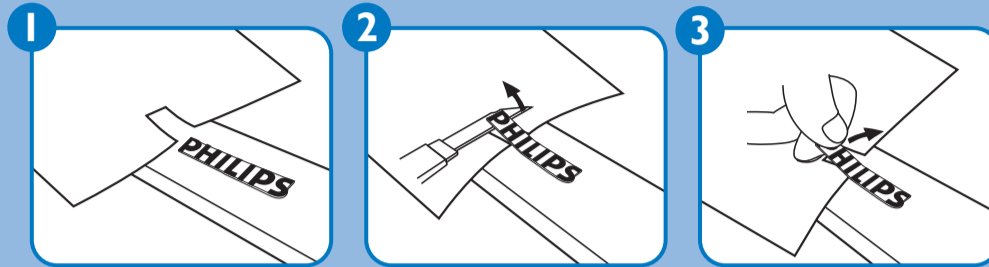
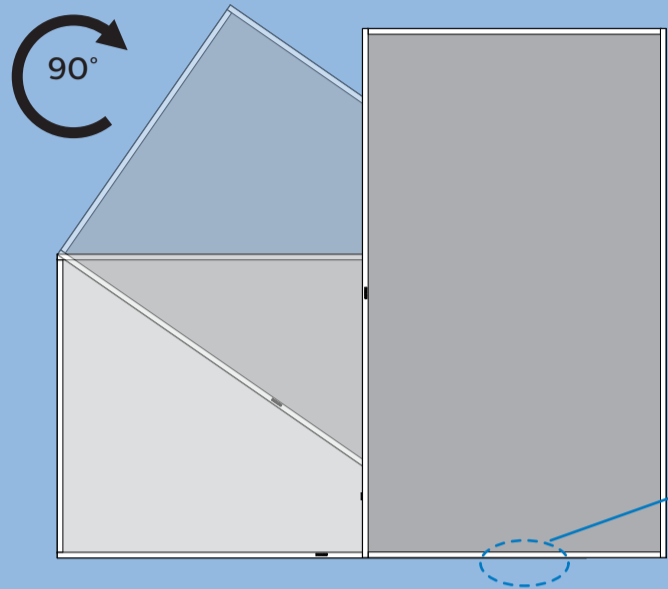


M6 * (10+X) mm
(X=Thickness of Wall mount BKT)
55BDL6002H: 400mm x 400mm



IR-IN IR-OUT RS232C IN RS232C OUT RJ45 RJ45 HDMI1 IN HDMI2 IN DVI IN DVI OUT DP IN DP OUT VGA IN Pr Pb Y/CVBS PC LINE IN SPEAKER SWITCH

5



PHILIPS

Professional Display Solutions

H line

55BDL6002H



Quick Start



Please check out the website below for more product information.
www.philips.com/signagesolutions-support



Envision Peripherals Inc.
 490 N McCarthy Blvd, Suite #120
 Milpitas, CA 95035
 USA

© 2020 Koninklijke Philips N.V. All rights reserved.
 Philips and the Philips Shield Emblem are registered trademarks of Koninklijke Philips N.V. and are used under license from Koninklijke Philips N.V.

Specifications are subject to change without notice.
 Version: V1.00 2020-07-07



Q41G55M181368A