

BlueParrott C300-XT User Manual

TABLE OF CONTENTS

Safety Information.....	3
Package Contents	4
Glossary of Terms	5
Headset Overview	6
Charging the Headset	7
• Battery Power Indicators	
• Operation While Using the Charger/Adapter	
How to Wear	9
• Wearing Options: Find Your Fit	
• Wearing and Adjusting the C300-XT	
Getting Started	11
• On/Off/Standby	
• Pairing with a Phone	
• Making/Taking Calls	
Voice Commands.....	14
Parrott Button	15
Advanced Features and Functions.....	16
• Multiple Device Pairing and Multipoint Mode	
• Proximity Pairing	
• Additional Features and Functions	
Functions & Indicators Table.....	19

SAFETY INFORMATION

IMPORTANT SAFETY NOTE: *Prolonged exposure to high volume levels can damage your hearing. To avoid injury, set the volume to the lowest comfortable level. If you experience ringing in your ears, or voices sound muffled, stop using the headset. Avoid turning up the volume to block noisy surroundings. It's possible for your ears to adapt to volume that is too high, and this could result in permanent hearing damage without any noticeable discomfort.*

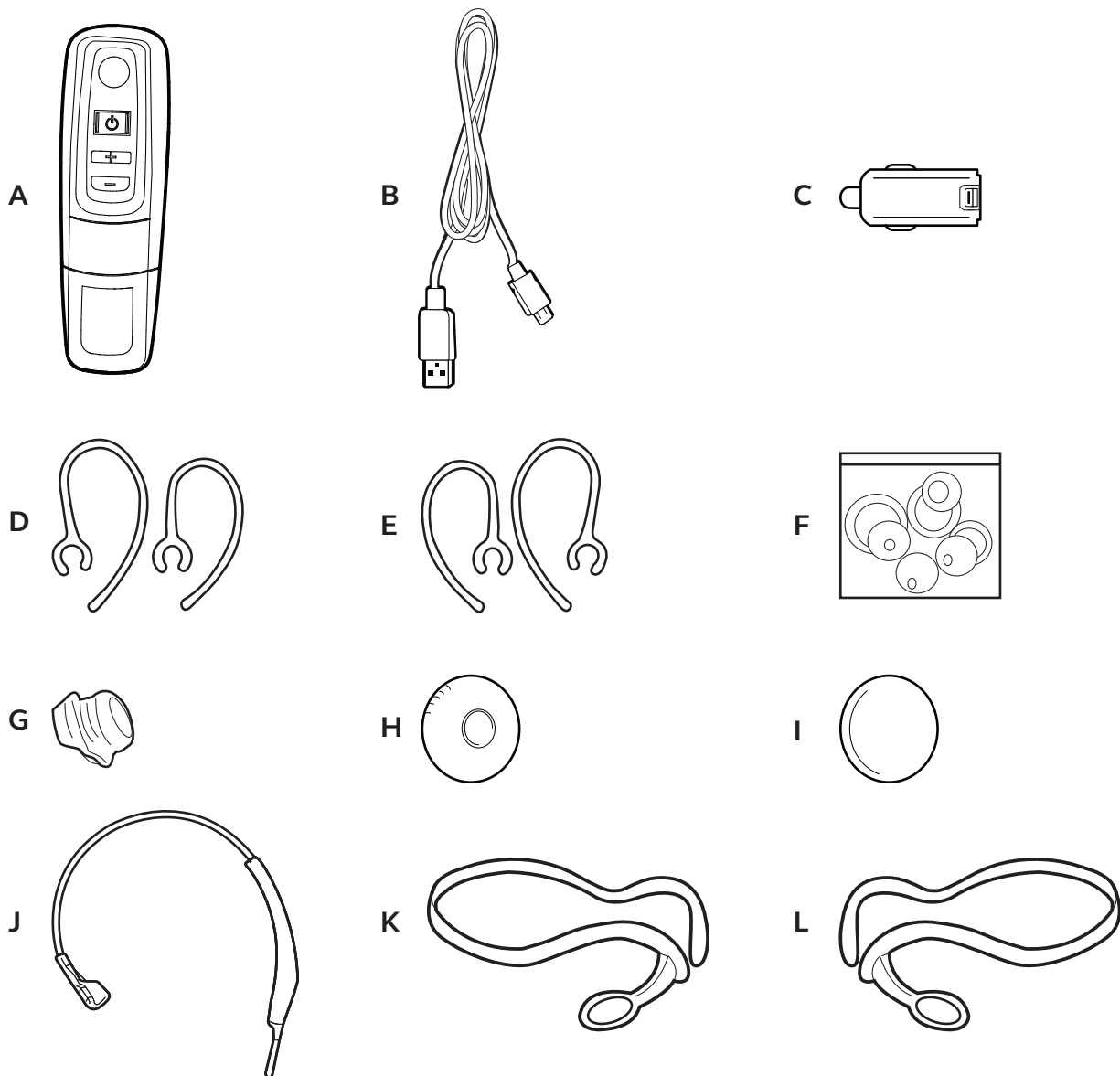
- Check with local and state laws regarding cell phone/headset usage while operating a motor vehicle.
- Do not immerse any part of this product in water.
- Plastic bags and small parts may cause choking if ingested. Keep them away from small children and pets.
- Use only the power cords included with this product.
- Avoid temperatures exceeding 140° F or 60° C (will cause equipment failure).

Images are not shown to scale.

PACKAGE CONTENTS

- A. C300-XT Headset
- B. USB Charging Cable
- C. Auto Adapter
- D. On-The-Ear Wearing Styles (Left)
- E. On-The-Ear Wearing Styles (Right)
- F. Eargels (assorted sizes)
- G. Wearing Style Converter
- H. Leatherette Ear Cushion
- I. Foam Ear Cushion
- J. Over-The-Head Wearing Style
- K. Behind-The-Neck Wearing Style (Right)
- L. Behind-The-Neck Wearing Style (Left)
- M. Quick Start Guide*
- N. Warranty and Compliance Insert*

*Not pictured.



Images are not shown to scale.

GLOSSARY OF TERMS

On: Headset is on, but there is no connection to the phone (red LED will flash).

MFB: Abbreviation for “Multifunction Button.”

Multipoint Mode: Multipoint Mode allows you to connect and switch between two Bluetooth devices.

Paired: Two Bluetooth devices agree to communicate with one another.

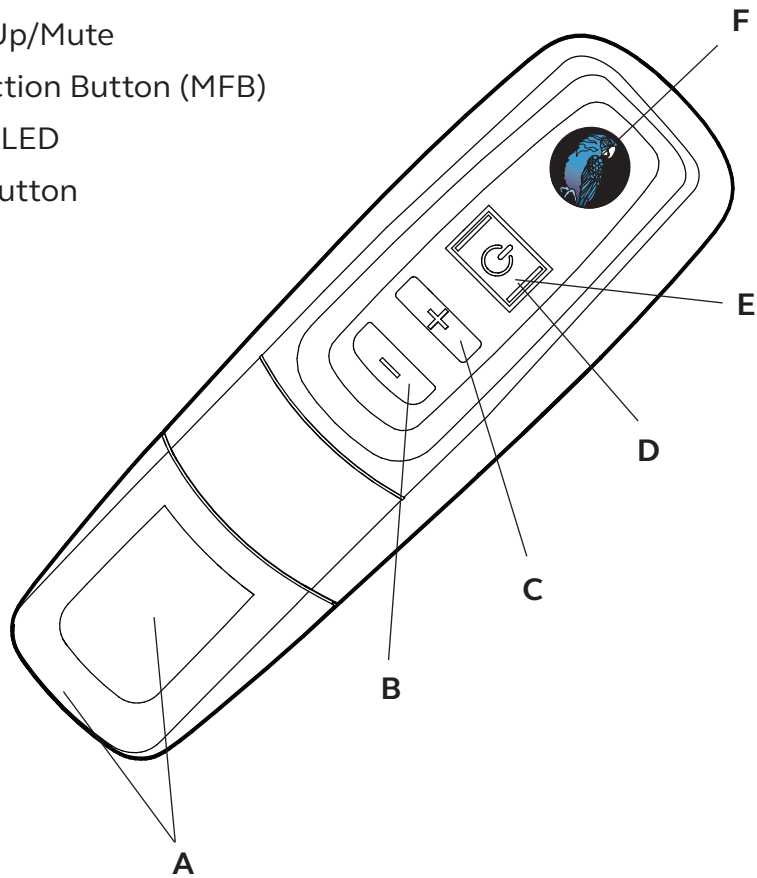
Standby Mode: Headset is on, Bluetooth link is active, and the user is not on a call (blue LED will flash).

Talk Mode: Headset is in use with the cell phone while the cell phone is on an active call (blue LED will flash).

A2DP: Advanced Audio Distribution Profile is a Bluetooth protocol for streaming audio other than call audio, e.g. music or GPS directions.

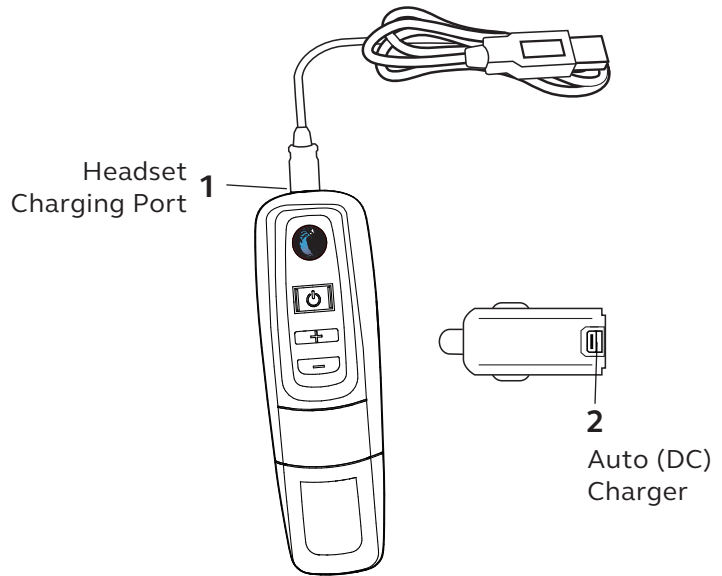
HEADSET OVERVIEW

- A. Microphones
- B. Volume Down
- C. Volume Up/Mute
- D. Multifunction Button (MFB)
- E. Indicator LED
- F. Parrott Button



CHARGING THE HEADSET

Connect the USB charging cable into the headset's USB charging port. If the headset is not fully charged, the indicator will turn red. When the indicator turns blue and remains blue, the unit is fully charged. A fully discharged battery will need approximately 2 hours to achieve a full charge.



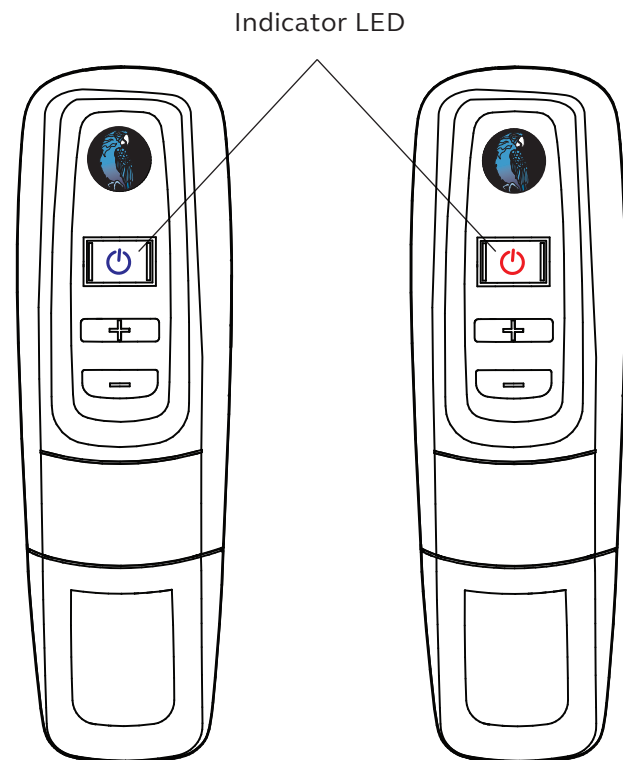
Battery Power Indicators

While charging, the MFB's indicator LED shows the level of battery power on your C300-XT as follows:

Blue LED: Fully charged. Over 10 hours' talk time.

Red LED: Less than a full charge.

For best performance, keep charging headset when not in use.



CHARGING THE HEADSET (continued)

Operation While Using the Charger/Adapter

The C300-XT headset will operate from battery power or from power supplied via the USB cable.

NOTE: *Do not attach the USB cable to a powered USB port mid-call. This will cause the headset to reset, and the call will be sent back to the phone.*

When the headset is operating from the battery, all indicator LEDs and sounds will function as described in this guide.

When the headset is operating from power supplied via the USB cable, the headset—including the audio indicators—will function as described in this user guide. However, the MFB LED will indicate the battery charge status.

While the headset is on the charger, press the MFB long enough to power the unit on. The headset should reconnect automatically unless your phone is set to “always ask” for connection requests.

After the battery is fully charged, the MFB LED will change from red to blue and stay blue as long as a powered USB cable is connected to the headset.

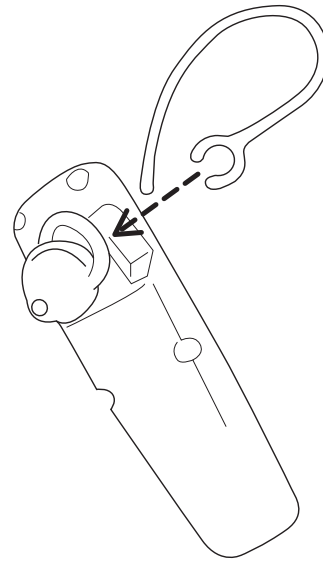
HOW TO WEAR

Wearing Options: Find Your Fit

The C300-XT headset is supplied with a choice of Over-the-Head, Behind-the-Neck, and On-the-Ear wearing styles:

On-The-Ear wearing style

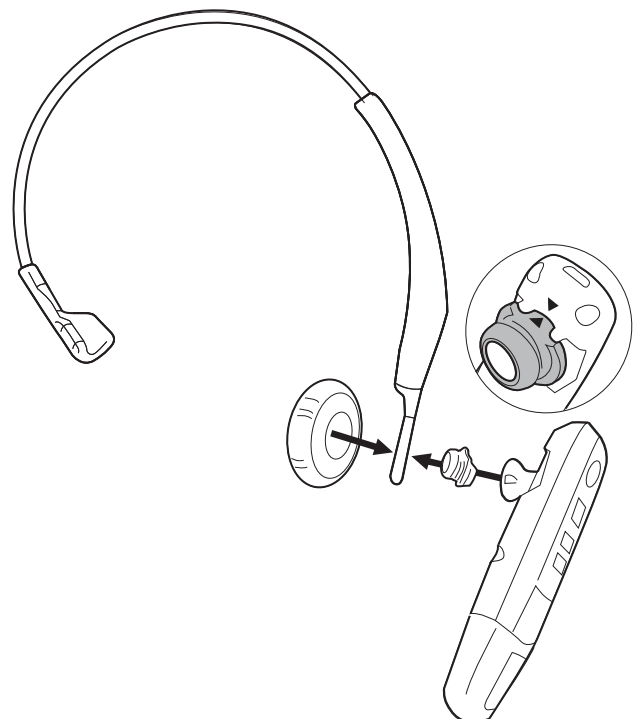
1. Attach the preferred eargel to the headset, as shown.
2. Attach the preferred earhook to the headset, as shown.



Over-The-Head and Behind-The-Neck wearing styles

1. Attach the wearing style converter to the headset, as shown, noting the alignment indicators on the adapter and the chassis of the headset.
2. Attach the preferred wearing style to the headset, as shown.
3. Add the leatherette or foam ear cushion.

Note: Both left and right versions of the Behind-the-Neck style are included; the Over-the-Head style is reversible for either left or right use.

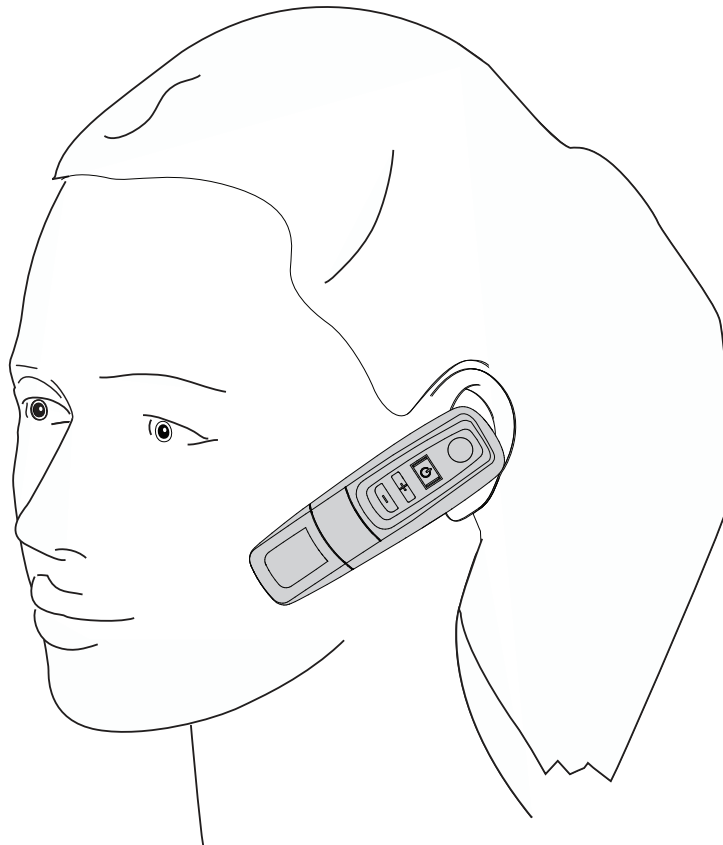


HOW TO WEAR (continued)

Wearing and Adjusting the C300-XT

To get the best noise-canceling performance, position the microphone pointed towards your mouth. Positioning is important; small adjustments in microphone placement can improve performance.

1. Place the headset on your head.
2. Position the speaker directly in or on your ear, depending on the selected wearing style. You can slide the headband in or out of the side support for proper fit.
3. Position the microphone so that it points towards the corner of your mouth.
4. The headband or neckbands can be adjusted by gently flexing it outward to loosen or inward to tighten.



GETTING STARTED

On/Off/Standby

Turn Headset On: Hold down the MFB for approximately 2-3 seconds until you hear a voice prompt, “power on.” The red LED will flash once every second.

Turn Headset Off: Hold down the MFB for approximately 4-5 seconds until you hear a voice notification “power off.” A red LED will flash 4 times and the headset will turn off.

Standby Mode: Once the headset is turned on (after the initial pairing), it will attempt to connect to the last device that it was paired with, putting itself into Standby Mode.

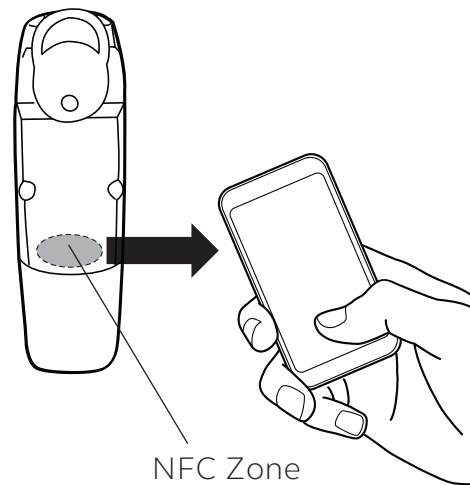
Pairing with a Phone

When you turn your C300-XT on for the first time, or if its Paired Device List has been cleared, it will go into pairing mode automatically. You can pair the headset using NFC or manually.

NFC (One-Touch) Pairing

1. Make sure that NFC is enabled on your cell phone.
2. Place the NFC zone of your cell phone against the NFC zone of the headset and hold them together until your cell phone registers the headset.
3. Follow the prompts on your cell phone to complete pairing.

Note: *NFC and One-Touch Pairing are dependent on your cell phone. The size and sensitivity of your phone’s NFC zone and the specific way to connect the headset may vary between devices.*



GETTING STARTED (continued)

Manual Pairing

If the C300-XT has already been paired with another device and you are not going to use NFC Pairing, you will need to put it into Pairing Mode manually:

Placing Headset in Pairing Mode

By Voice:

Activate headset voice recognition by pressing the Parrott Button or by pressing and holding the Volume Up button. Then, after the prompt, say “pair mode.” The headset will enter Pairing Mode and be visible for pairing to devices for 120 seconds.

Using Buttons:

With the headset powered off, press the MFB until the LED rapidly flashes blue and you hear the audio prompt “power on.” *Keep holding* the MFB for approximately 10 seconds until you hear “Pair Mode”. The LED will rapidly flash blue and red when in Pairing Mode, and will be visible for pairing to devices for 120 seconds.

Pairing to a Cell Phone

1. Make sure that other Bluetooth devices are turned off or out of range.
2. Place the headset into Pairing Mode.
3. Put your cell phone in Bluetooth Search/Scan Mode per the manufacturer’s instructions.
4. Select “BP C300-XT” to pair. (Passcode is “0000” if needed.)
5. Accept the phone book access request to enable caller ID in the headset.
6. When connected, the headset will give you the voice prompt, “Your headset is connected.”

GETTING STARTED (continued)

Making/Taking Calls

The headset must be on and connected with your phone.

Making a Call

1. Dial the desired number on your phone. You will hear the call in the headset.
2. To end the call, press the MFB once. The call will end and the headset will enter standby mode.

Answering a Call

By Voice:

1. When you receive a call, you will hear ringtones in the headset, or the caller ID. Say “answer” to answer the call.
2. To end the call, press the MFB once. The call will end and the headset will enter standby mode.

Using Buttons:

1. When you receive a call, you will either hear ringtones in the headset, or the caller ID. Press the MFB once to answer the call.
2. To end the call, press the MFB once. The call will end and the headset will enter standby mode.

Rejecting a Call

By Voice:

1. To reject an incoming call, say “ignore.” You will hear two descending tones and the call will be transferred to your voicemail (if available).

Using Buttons:

1. To reject an incoming call, press and hold the MFB for two seconds. You will hear two descending tones and the call will be transferred to your voicemail (if available).

VOICE COMMANDS

The C300-XT will recognize English voice commands, enabling you to handle incoming calls without touching the headset. You can say “answer” to accept an incoming call, or “ignore” to reject it.

When not on a call, press the Parrott Button (if not reconfigured to do something else), or press and hold the Volume Up button to activate voice commands. For a list of available commands, say “What can I say?”

Voice Commands Available:

Answer – Accepts an incoming call

Ignore – Rejects the incoming call and sends it to voicemail (if available)

What can I say? – Provides a list of available commands

Pair mode – Puts the headset into pairing mode

Am I connected? – Verifies that the headset is connected to a device

Check battery – Reports the current battery level in the headset and paired device (if applicable)

Redial – Redials the last outgoing call

Callback – Dials the last incoming call (if the phone number is known)

Cancel – Cancels voice command

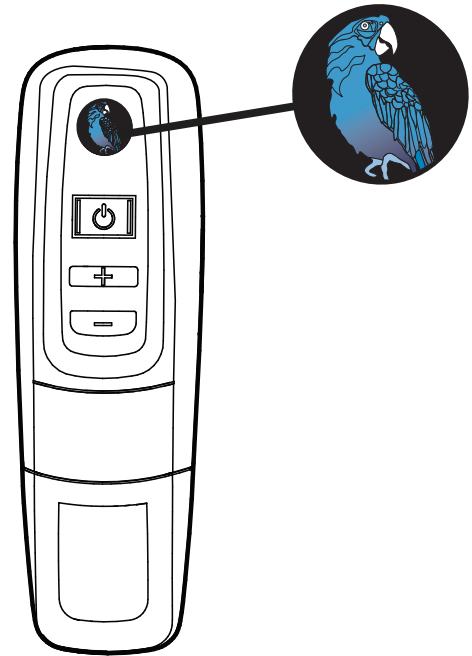
PARROTT BUTTON

As provided from the factory, the Parrott Button provides an easy way to mute the headset on a call and activates voice commands when not. However, you can also configure the button for other functions, such as a speed dial button for a dedicated phone number, or to launch a particular application on your phone.

If the Parrott Button is reconfigured to provide a different function, voice commands can still be activated by pressing and holding the Volume Up button.

To change the Parrott Button functions, you will need to download an app for your smartphone (Android or iOS) or PC.

Go to www.blueparrott.com/software for updates and more information.



ADVANCED FEATURES AND FUNCTIONS

Multiple Device Pairing and Multipoint Mode

The C300-XT has pairing memory for up to eight (8) devices. The headset can also use Multipoint Mode, which means that it can be connected to two (2) Bluetooth devices at the same time. You do not have to do anything to enable Multipoint Mode.

Using the C300-XT in Multipoint Mode

1. First make sure the headset is paired with both your devices.
2. With both devices in range and with their Bluetooth enabled, turn the headset on.
3. As each Bluetooth device connects to the headset, you will hear the voice prompt, “Your headset is connected.”

The C300-XT will monitor both phones and enable you to answer a call on either one using the headset.

If you are on a call and the other device receives a call, you will hear a notification in the headset.

Disabling and Re-enabling Multipoint Mode

Multipoint Mode can be disabled with the following process:

1. “Unpair” (Android) or “forget” (iOS) the C300-XT from your phone’s Bluetooth list.
2. Power on the headset.
3. Press and hold the Parrott Button, MFB and Volume Up buttons at the same time for 6-7 seconds. The MFB LED will flash blue twice, and the headset will enter Pairing Mode.
4. Re-pair the C300-XT to your device.
5. Multipoint Mode is disabled and the headset can only be used with one device at a time.

If you wish to re-enable Multipoint Mode, repeat the process above.

Proximity Pairing

Proximity Pairing is an alternative method of pairing where the headset initiates the pairing process instead of your phone.

1. Make sure the headset is powered on and not connected to another device.
2. Set your phone so it is “discoverable,” or visible to other devices.
3. Simultaneously press the MFB and the Volume Down button, if headset is not already in pair mode.
4. You should hear the voice prompt “pair mode” in the headset.
5. The headset LEDs should now be alternating red and blue.
6. The headset initiates pairing activity, and the incoming pairing request must be accepted on the phone. **NOTE:** This may include entering the pin number “0000” (four zeros).

ADVANCED FEATURES AND FUNCTIONS (continued)

Additional Features and Functions

Last Number Redial

By Voice:

You can use voice commands to dial both the last outgoing and last incoming call.

- To redial the last outgoing call, activate voice command and say “redial.”
- To call back the last incoming call, activate voice command and say “callback.”

Using Buttons:

To redial the last outgoing call that was dialed from the cell phone, press and hold the Volume Down button for approximately 1 second. A beep will sound and the phone will redial the last number.

Call Waiting/Rejecting a Call

If you are on an active call and a second call comes in, you will hear a low tone notification in the headset. Where supported by your phone, you can either accept the incoming call and end the active call, accept the incoming call and place the active call on hold, or reject the incoming call and continue the active call.

- To accept the incoming call and end the active call, press the MFB once to end, and then press it once again to answer.
- To accept the incoming call and place the active call on hold, quickly press the MFB twice.
- To reject the incoming call, press and hold the MFB for 1-2 seconds.

Rejecting a Call

By Voice:

To reject an incoming call by voice when not on another call, say “ignore.”

Using Buttons:

To reject an incoming call manually, press and hold the MFB for 1-2 seconds.

Phone Voice Control (e.g. Siri, Google Assistant)

Press the MFB once while the headset is in standby mode to initiate voice command functions on your phone. Support for this is phone dependent. See your phone’s user guide for more information.

ADVANCED FEATURES AND FUNCTIONS (continued)

Muting

By default, the Parrott Button will act as a mute on calls (unless it has been configured for another function). The Volume Up button will also function to control mute.

- Unless otherwise configured, pressing the Parrott Button while on a call will mute the headset. Press again to unmute. Mute and unmute is indicated by a beep.
- To use Volume Up to mute the headset microphone while on a call, press and hold the Volume Up button for 1-2 seconds. To unmute, press and hold the button again for 1-2 seconds.
- While muted, a reminder tone will sound every 10 seconds.

Transferring Audio

To transfer audio from the headset to the cell phone while on a call, press and hold the Volume Down button for 1-2 seconds. The audio will transfer to the phone. Repeat to transfer audio back to the headset. When audio is transferred to the phone, the LED on the headset will be off until audio is transferred back to the headset.

Turning Headset Indicator Lights On/Off

Simultaneously pressing the Volume Up and Volume Down buttons together will turn the headset indicator LEDs off. Repeat to turn the indicator LEDs on.

When powering on the headset, the indicator LEDs will be in the same state as they were when last powered off.

Reset Headset Paired Devices List

This will reset, or clear the headset's internal paired devices list. The headset must be on to perform this function.

1. Power on the headset. It does not matter if it connects to any devices.
2. Hold the headset near your ear and press and hold the Volume Up and the Volume Down buttons together for approximately 6-10 seconds until two low tones sound.
3. Power off the headset. The pairing memory is now clear and the headset will need to be paired to any desired devices before it can be used with them.

Reset Parrott Button Defaults

This will reset or clear the headset's internal paired devices list and will also restore the Parrott Button's factory defaults (voice command and mute). The headset must be on to perform this function.

1. Power on the headset. It does not matter if it connects to any devices.
2. Press and hold the Parrott Button and the Volume Down buttons together for approximately 6-10 seconds until you see two quick purple flashes on the MFB.
3. The headset Parrott Button is reset and the pairing memory is now clear. The headset will re-enter pairing mode. If you are not ready to re-pair to your device, power off the headset.

FUNCTIONS & INDICATORS TABLE

Function	Button/Duration of Press	LED Indicator	Audio Indicator	Voice Indicator (in English)
Power On	MFB (2-3 seconds)	3 fast blue flashes	Short tone	“Power on”
Power Off	MFB (3-4 seconds)	4 fast red flashes	NONE	“Power off”
Enable Pairing Mode	MFB (5-15 seconds)	Red and blue, alternating	NONE	“Pair mode”
Volume Up	Volume Up (quick press)	NONE	Single tone	NONE
Volume Down	Volume Down (quick press)	NONE	Single tone	NONE
Mute (On/Off)	Parrott Button (quick press) or Volume Up (2 seconds)	NONE	Single tone, reminder tone every 10 seconds	NONE
Answer a Call	MFB (quick press) or say “Answer”	Blue flash, once per second	Two rising tones	NONE
End a Call	MFB (quick press)	Blue flash, every 4 seconds	Two falling tones	NONE
Reject a Call	MFB (1-2 seconds) or say “Ignore”	NONE	Two falling tones	NONE
Transfer Audio	Volume Down (1-2 seconds)	NONE	Long, low tone	NONE
Initiate Voice Commands (when in standby mode)	Parrott Button (quick press) or Volume Up (2 seconds)	NONE	Short tone	“Please say a command”
Low Battery	N/A	Red flash	NONE	“Battery very low”



BlueParrott | 900 Chelmsford Street, Tower II, 8th Floor | Lowell, MA 01851

blueparrott.com/support